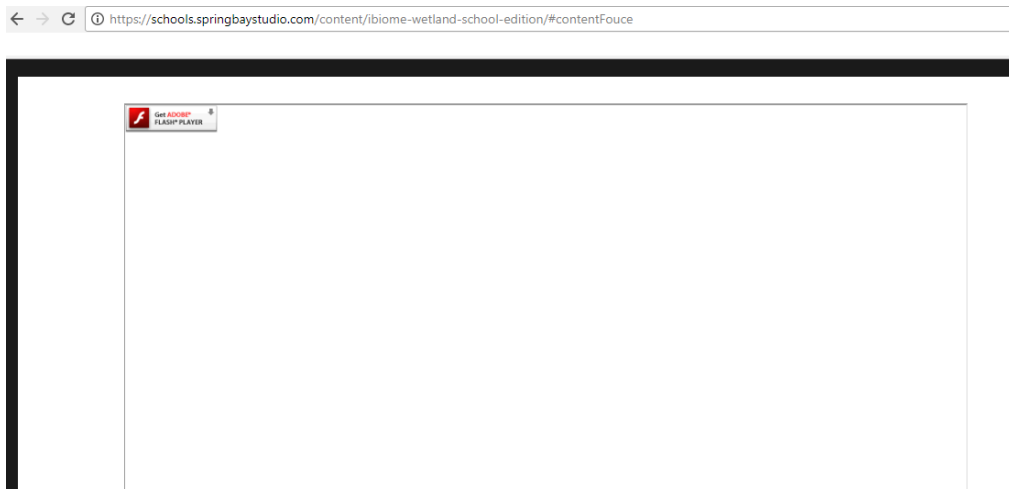



Enable Adobe Flash Content

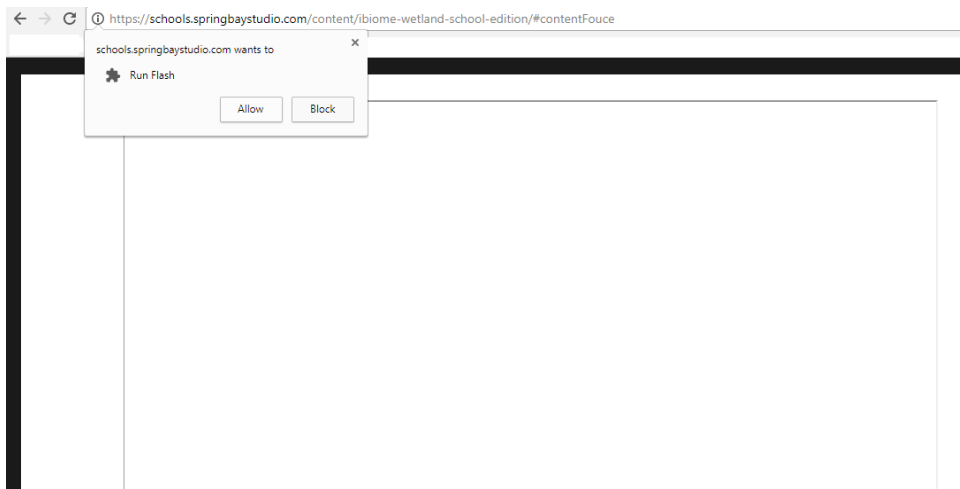
1. You can access iBiome games online from a web browser from PC/Mac/Laptop/Chromebooks. If you are using mobile devices, you can't access those games online.
2. Your browser needs to have Flash Player installed in order to play iBiome games online. You can download it from Adobe's website: <https://get.adobe.com/flashplayer/>
3. Depending on the browser setting in your computer, sometimes you might see Flash player enabling requests.
4. If you can't get your browsers load the games, please contact us for help: support@springbaystudio.com

If you are using Google Chrome:

When you click "Play" from any of our games, and see the following page



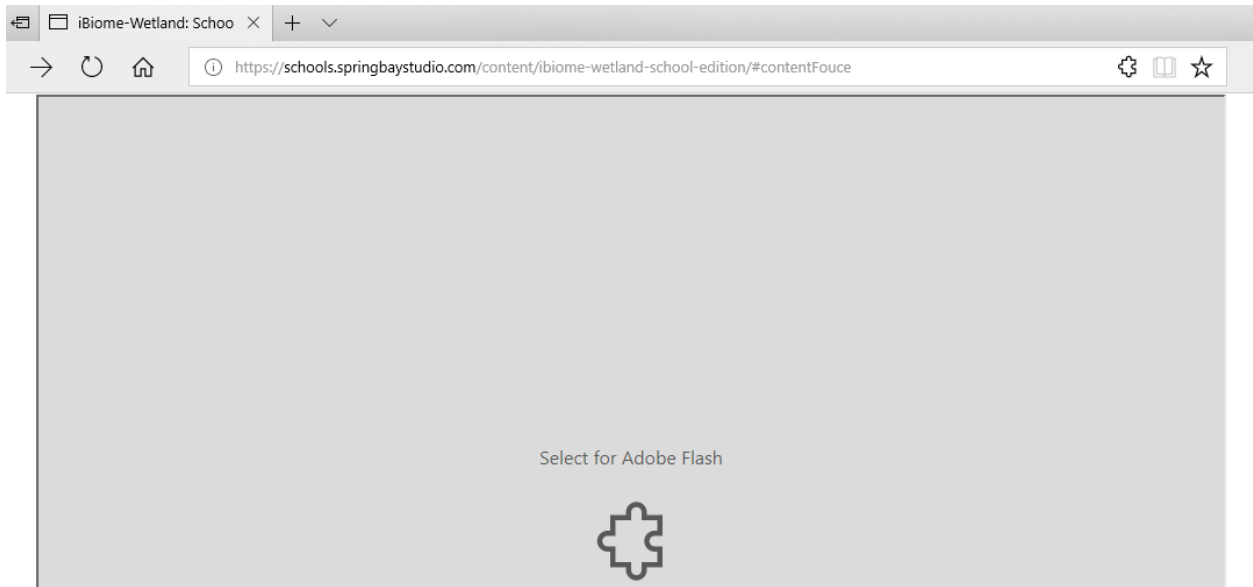
Click on the  sign, and you can enable Flash safely by clicking on the "Allow" button:



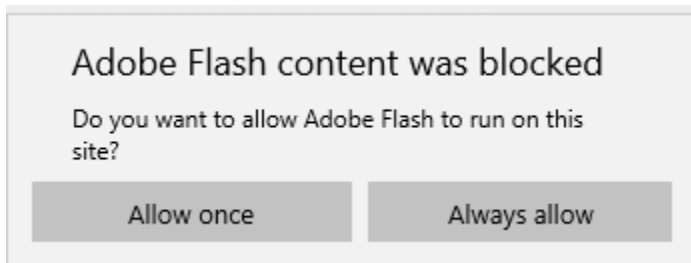
After that, the game will be loaded.

If you use Microsoft Edge:

When you click “Play” from any of our games, and see the following sign:



Click anywhere on the screen, then you will see a popup from Edge:



Or this popup:

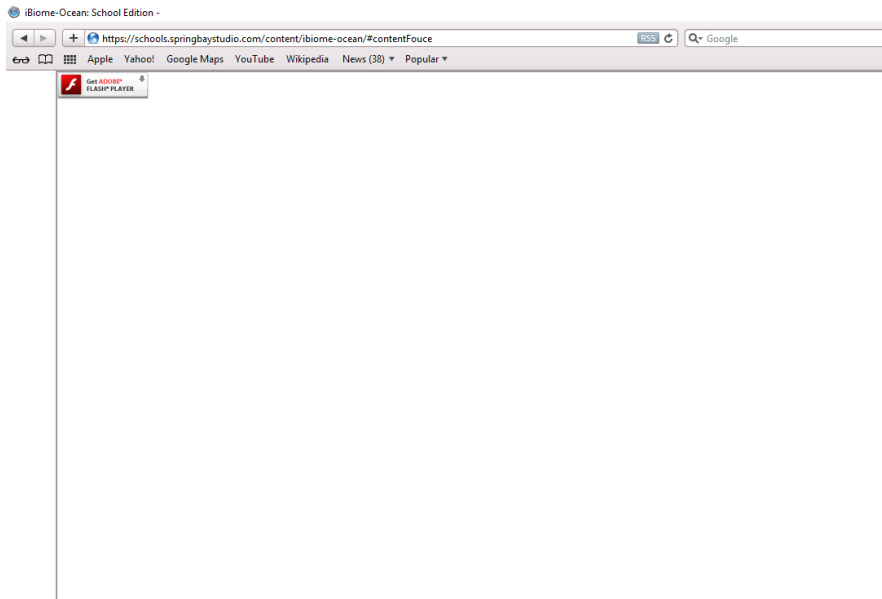



Click any button will launch our games, however, if you click on “Allow once”, you will see the same popup next time you launch our games.

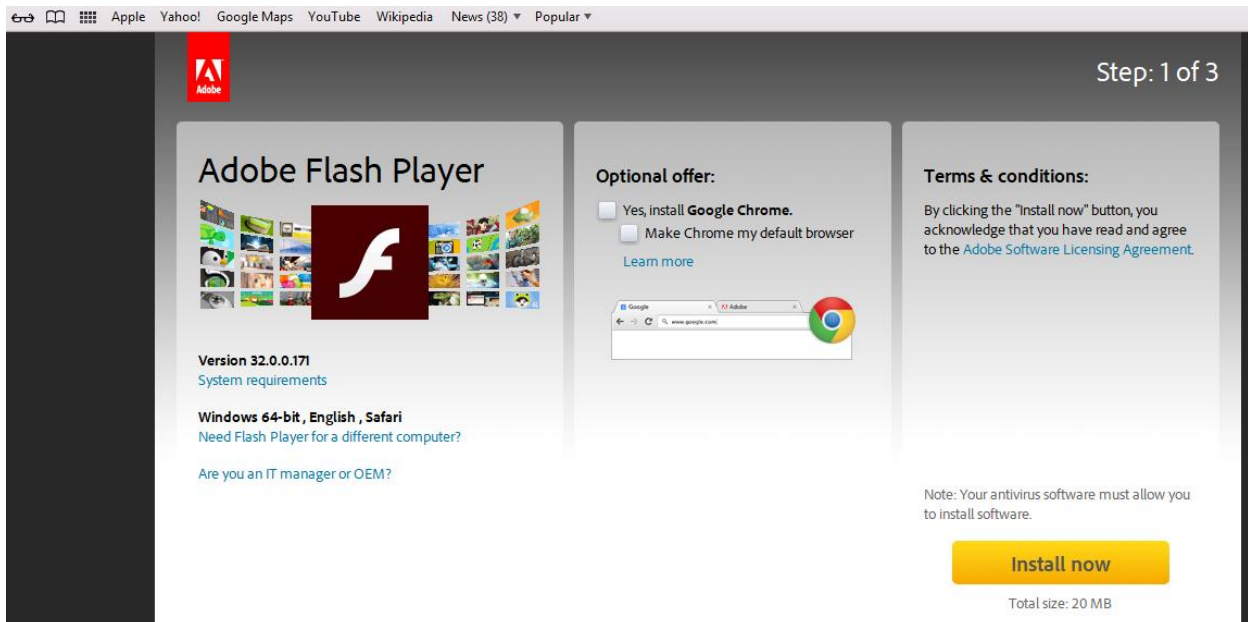
After that, the games will be loaded.

If you are using Safari:

When you click “Play” from any of our games, and see the following sign:

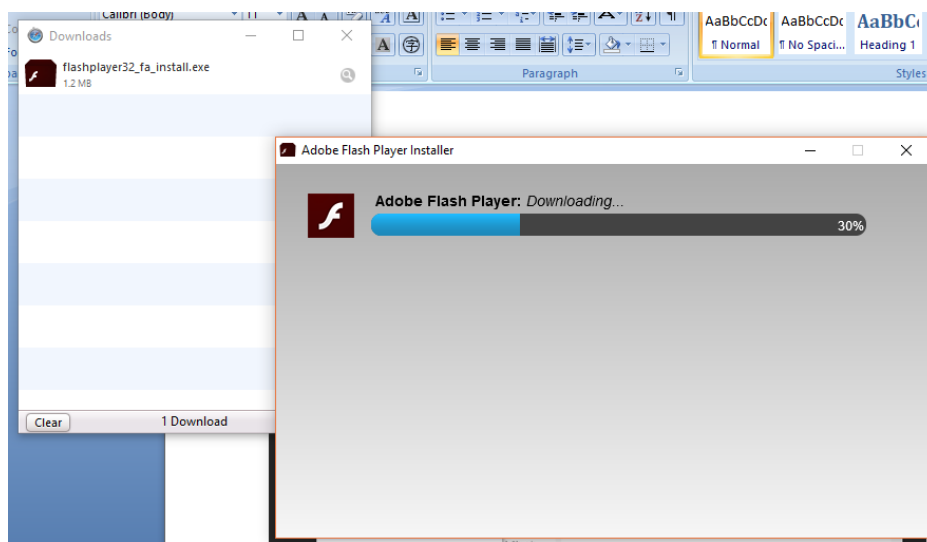
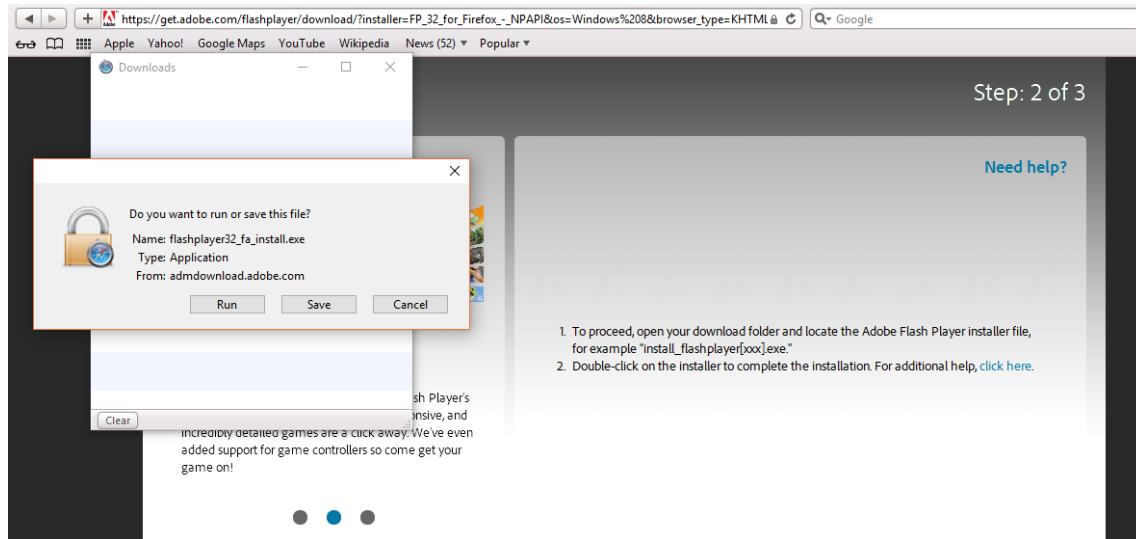


Click on the  sign, and it may bring you to the Flash Player download page, if you don't have it installed.

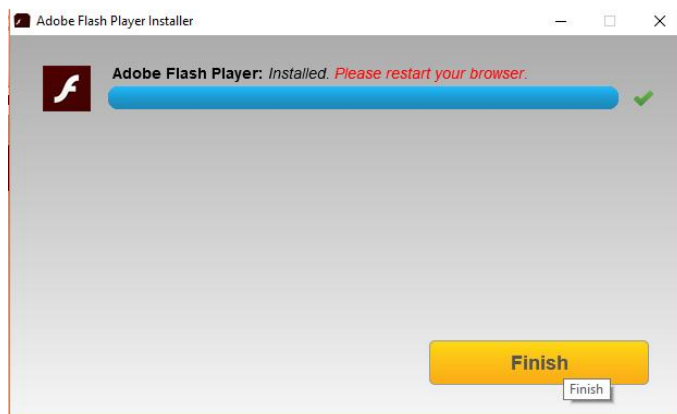


Go ahead and click “Install Now” button to install Flash Player.

After that, you need to click on “Run” on the following Safari popup to start installing Flash Player in Safari.



Follow the prompt to restart Safari browser, if you see the instruction like this after the installation is completed:



After that, you should be able to launch our games in Safari.